

Head Office:
Dixon Kelley Estate Agents
1 Penn Court
Station Road, West Moors
Dorset. BH22 0JJ

DORSET PARK HOMES

DRAFT

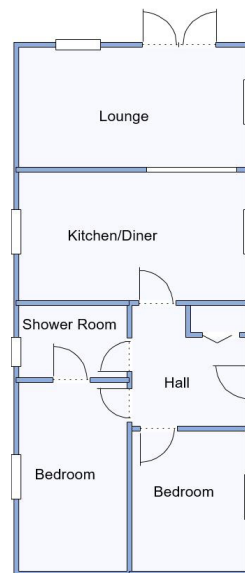
www.dorsetparkhomes.com

Telephone: 01202 877511

5 Silent Woman Park, Coldharbour, Wareham, Dorset. BH20 7PE



Well Presented Modern Park Home



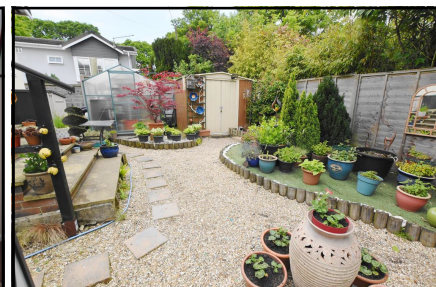
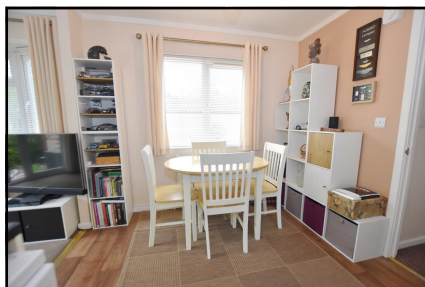
This drawing has been prepared for diagrammatic purpose only. Not to scale

2 Bedroom Park Home approx 36' x 16'

Accommodation & approximate room dimensions:

- 'Tingdene' 2013
- Spacious Entrance Hall: Double cloaks cupboard.
- 'Open Plan Living Space'
- Kitchen/Diner: approx 15'1" x 8'7". Range of floor and wall cupboards. Built-in oven & hob. Integrated fridge/freezer. Space for washing machine & dishwasher. Ample space for dining suite.
- Lounge: approx 15'1" x 8'0". Feature fireplace with electric fire (untested). Double doors to garden.
- Bedroom 1: approx 12'9" x 7'3". Built-in wardrobe
- Shower Room: Large shower cubicle with thermostatic shower unit (untested). Wash basin & WC.
- Bedroom 2: approx 9'8" x 7'3". High level storage cupboards.
- LPG Gas Central Heating (system untested)
- PVCu Double-Glazing
- Delightful Garden: Laid to artificial lawn with an area laid to shingle with shaped flower beds and borders. Paved patio. Metal Shed.
- Parking on Plot
- Age Restriction 50+
- One Dog or Cat Permitted

Close to Forest & Heathland



Pitch Fee: approx £213 per month

Subject to Annual Review

Council Tax: 'A' Band

Tenure: 1983 Mobile Homes Act Agreement

Price £174,950

VIEWING STRICTLY BY APPOINTMENT WITH THE VENDOR'S AGENT Dorset Park Homes 01202 877511

IMPORTANT NOTE: These particulars are believed to be correct but their accuracy is not guaranteed. They do not form part of any contract. Nothing in these particulars shall be deemed to be a statement that the property is in good structural condition or otherwise, nor that any of the services, appliances, equipment or facilities are in good working order or have been tested. Purchasers should satisfy themselves on such matters prior to purchase Ref.W04603

The recommended specialist in Park Home sales
Proprietor: Simon Dixon

